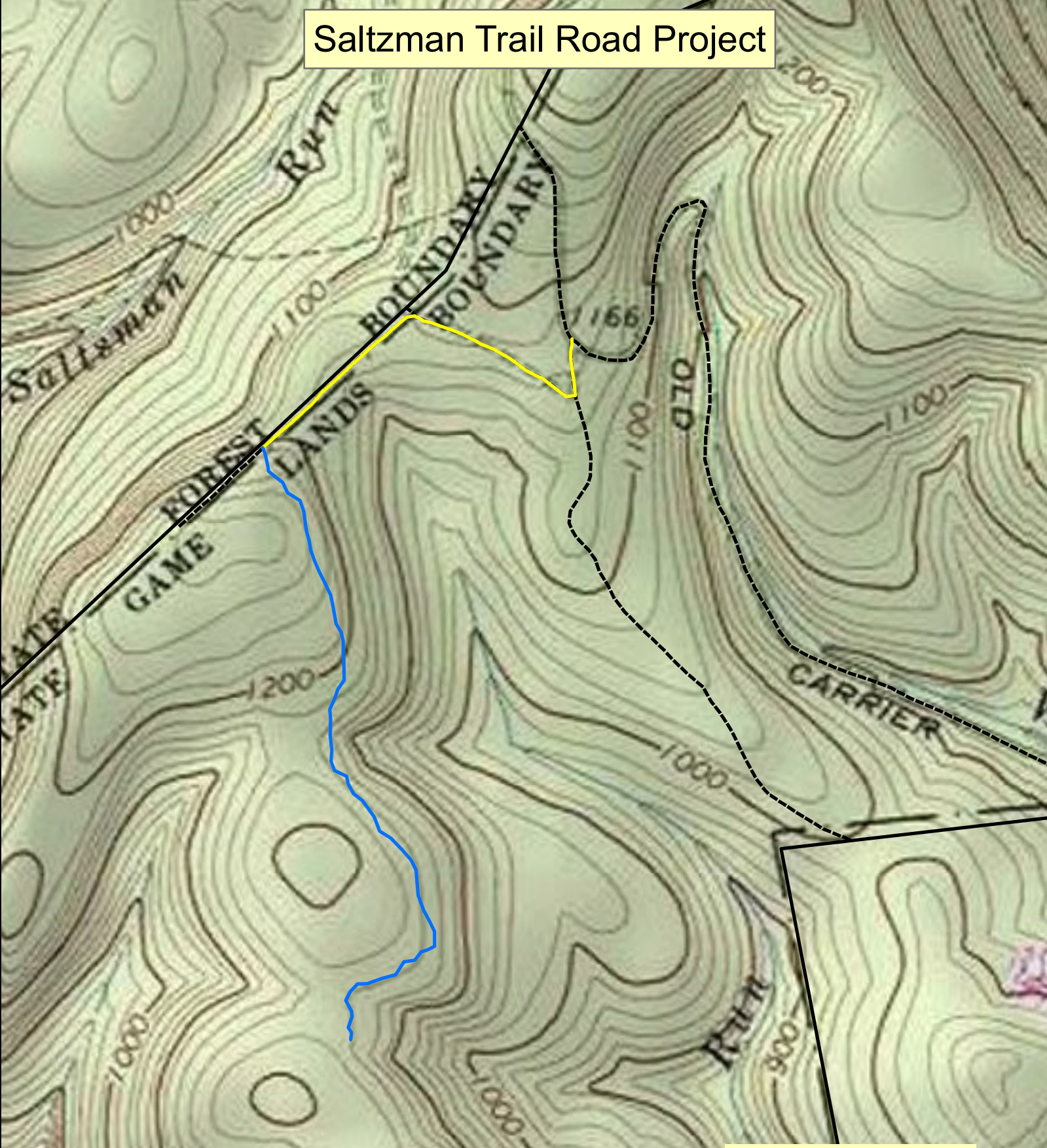
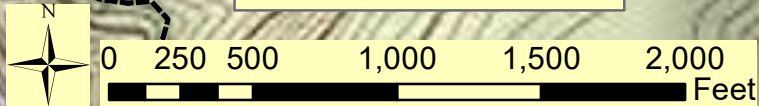


Saltzman Trail Road Project




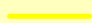


Road to Improve = 2,303 feet
Road to Construct = 3,806 feet



Clinton County
Colebrook Township
State Game Lands 89

Map Created By
Kyle T. Clouse, Forester
PA Game Commission
October 1, 2019

Legend

-  Road to Construct
-  Road to Improve
-  SGL Boundary
-  PGC Roads